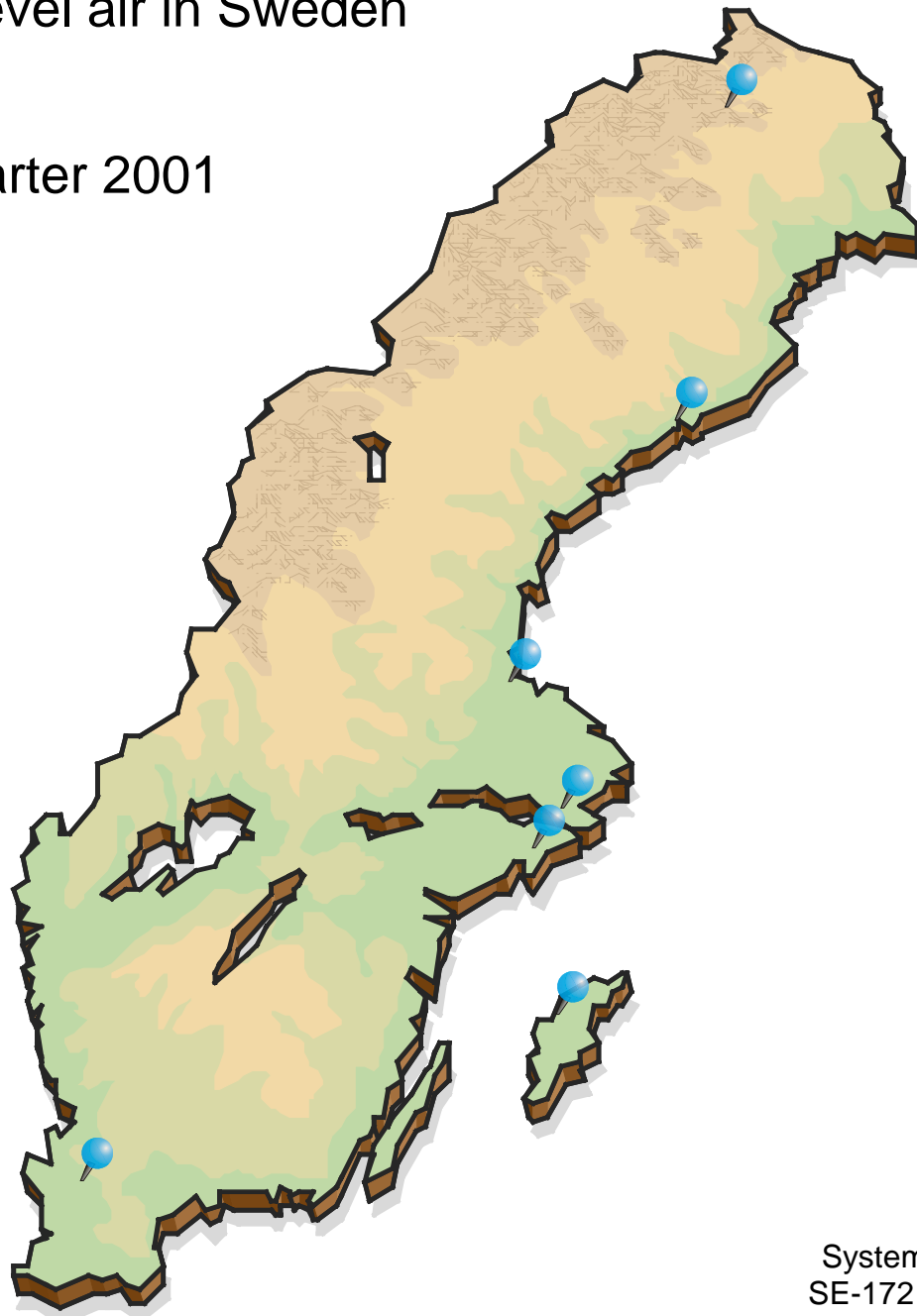


Catharina Söderström, Rune Arntsing, Ingemar Vintersved

Quarterly report on measurements of radionuclides in ground level air in Sweden

Third quarter 2001



SWEDISH DEFENCE RESEARCH AGENCY

Systems Technology
SE-172 90 Stockholm

FOI-R--0385--SE

January 2002

ISSN 1650-1942

User report

Catharina Söderström, Rune Arntsing, Ingemar Vintersved

Quarterly report on measurements of radionuclides in ground level air in Sweden

Third quarter 2001

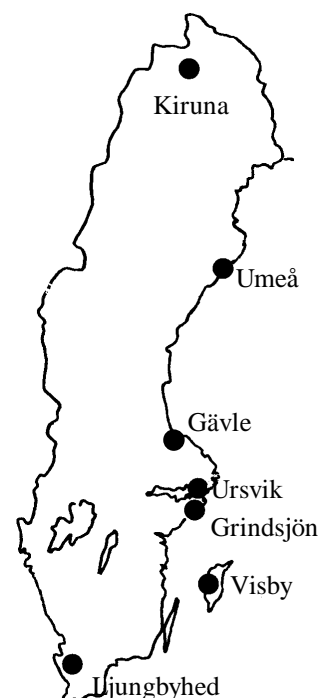
Issuing organization FOI – Swedish Defence Research Agency Systems Technology SE-172 90 Stockholm	Report number, ISRN FOI-R--0385--SE	Report type User report
	Research area code 3. Protection against Weapons of Mass Destruction	
	Month year January 2002	Project no. E6716
	Customers code 2. NBC Defence Research	
	Sub area code 31 Nuclear Defence Research	
Author/s (editor/s) Catharina Söderström Rune Arntsing Ingemar Vintersved	Project manager Ingemar Vintersved	
	Approved by	
	Scientifically and technically responsible	
Report title Quarterly report on measurements of radionuclides in ground level air in Sweden. Third quarter 2001.		
Abstract (not more than 200 words) Filtering of ground level air is performed weekly at seven different locations in Sweden: Kiruna, Umeå, Gävle, Ursvik, Grindsjön, Visby and Ljungbyhed. The filters are compressed and the contents of different radionuclides are measured by gamma spectroscopy. Precipitation is also collected at four of the stations: Kiruna, Gävle, Ursvik and Ljungbyhed, the samples are ashed and the contents of radionuclides measured. The levels of ^7Be and ^{137}Cs in air and deposition are presented for the different stations. Other anthropogenic radionuclides detected, if any, are also presented.		
Keywords Airborne radionuclides, deposition, ^7Be , ^{137}Cs		
Further bibliographic information	Language English	
ISSN 1650-1942	Pages 8 p.	
	Price acc. to pricelist Security classification	

Utgivare Totalförsvarets Forskningsinstitut - FOI Systemteknik 172 90 Stockholm	Rapportnummer, ISRN FOI-R--0385--SE	Klassificering Användarrapport
	Forskningsområde 3. Skydd mot massförstörelsevapen	
	Månad, år Januari 2002	Projektnummer E6716
	Verksamhetsgren 2. NBC-skyddsforskning	
	Delområde 31 N-forskning	
Författare/redaktör Catharina Söderström Rune Arntsing Ingemar Vintersved	Projektledare Ingemar Vintersved	
	Godkänd av	
	Tekniskt och/eller vetenskapligt ansvarig	
Rapportens titel (i översättning) Radionuklider i markluft i Sverige. Kvartalsrapport, tredje kvartalet 2001.		
Sammanfattning (högst 200 ord) Stationer för filtrering av markluft finns på sju olika ställen i Sverige: Kiruna, Umeå, Gävle, Ursvik, Grindsjön, Visby och Ljungbyhed. Filtren analyseras veckovis genom gammaspektroskopi med germaniumdetektor. Nederbörd samlas in på fyra av dessa stationer: Kiruna, Gävle, Ursvik och Ljungbyhed. Nederbördsproven askas in och mäts på samma sätt. Halterna i luft och deposition av ⁷ Be och ¹³⁷ Cs presenteras för de olika stationerna. I de fall andra antropogena radionuklider detekterats presenteras även dessa.		
Nyckelord Luftburen radioaktivitet, deposition, ⁷ Be, ¹³⁷ Cs		
Övriga bibliografiska uppgifter	Språk Engelska	
ISSN 1650-1942	Antal sidor: 8 s.	
Distribution enligt missiv	Pris: Enligt prislista Sekretess	

Sampling and analysis procedures

Sampling of ground level air is performed at seven different locations in Sweden, as follows:

Kiruna:	67,84° N	20,42° O
Umeå:	63,85° N	20,34° O
Gävle:	60,40° N	17,14° O
Ursvik:	59,39° N	17,96° O
Grindsjön:	59,07° N	17,82° O
Visby:	57,63° N	18,32° O
Ljungbyhed:	56,08° N	13,23° O



At all stations except at Grindsjön, 1000 m³/h of air is filtered through a glass fibre filter (Camfil type CS 5.0). At Grindsjön 5500 m³/h of air is filtered through 5 filters. At each station the filters are changed twice a week (Monday and Thursday or Friday) and sent by mail to our laboratory for measurement and analysis.

Weekly samples are made from each station by taking 3/4 of each filter (1/4 of the filter is left for the archive) and compress them together into a small disc (diameter 60 mm, thickness 13 mm). These samples are measured, 3-4 days after the collection, on well shielded High Purity Germanium (HPGe) detectors. From the Grindsjön station, the 10 filters produced per week are assembled in a Marinelli like geometry by pressing them into one circular disc, placed on top of the detector, and into five rectangular bricks (77 mm by 48 mm by 13 mm) placed around the detector.

At four of the stations (Kiruna, Umeå, Ursvik and Ljungbyhed) a small part of the air flow (12m³/h) that has passed the filter is taken through a charcoal cartridge in order to collect gaseous iodine. The cartridges are changed weekly but only analysed if particulate iodine in greater amount has been detected in the filter.

The stations in Kiruna, Gävle, Ursvik and Ljungbyhed are each equipped with a big stainless steel funnel (1m radius) to collect the precipitation that is passed through a cartridge consisting of a filter part, an anion part and a cation part. The cartridges are changed weekly and sent by mail to our laboratory. Four samples are combined to a monthly sample by ashing. The samples are measured on our HPGe detectors. From these measurements the total deposition is calculated.

Radionuclides seen in the filters are normally only the naturally occurring radon daughters and ⁷Be. Most of our stations also detect ¹³⁷Cs, which is due to the resuspension of the Chernobyl fallout. In tables I and II the concentrations of ⁷Be and ¹³⁷Cs are presented. The depositions at the stations where we collect precipitation are presented in table III. Sometimes we also detect other anthropogenic radionuclides and in that case these are presented in Table IV.

Table I

⁷Be concentrations in Sweden, third quarter 2001

<i>Week starting</i>	<i>Kiruna</i>	<i>Umeå</i>	<i>Gävle</i>	<i>Ursvik</i>	<i>Grindsjön</i>	<i>Visby</i>	<i>Ljungbyhed</i>
2-jul	1500 (0.3)	1570 (0.3)	3210 (0.3)	3440 (0.2)	3690 (0.1)	2330 (0.2)	3300 (0.2)
9-jul	2150* (0.2)	2500 (0.3)	2420 (0.3)	2600 (0.2)	2890 (0.1)	2390 (0.2)	2550 (0.2)
16-jul	2150* (0.2)	430 (0.6)	1230 (0.4)	2040 (0.2)	1920 (0.1)	1910 (0.2)	2870 (0.2)
23-jul	1340 (0.2)	1960 (0.2)	2670 (0.4)	3080 (0.2)	3140 (0.1)	2520 (0.2)	2190 (0.2)
30-jul	810 (0.5)	1490 (0.3)	2860 (0.3)	1930 (0.2)	2110 (0.1)	1830 (0.2)	2500 (0.2)
6-aug	1250* (0.2)	1580 (0.3)	1670 (0.4)	1800 (0.2)	1860 (0.1)	1490 (0.2)	1820 (0.2)
13-aug	1250* (0.2)	1560 (0.3)	2100 (0.3)	2370 (0.2)	2120 (0.1)	2060 (0.2)	2790 (0.2)
20-aug	2090 (0.2)	2120 (0.2)	2640 (0.2)	2430 (0.2)	2390 (0.1)	2050 (0.2)	2760 (0.2)
27-aug	1970 (0.2)	1880 (0.2)	2060 (0.3)	2300 (0.2)	2450 (0.1)	1700 (0.2)	1710 (0.3)
3-sep	1880 (0.2)	1410 (0.3)	1350 (0.4)	1420 (0.3)	1400 (0.2)	1180 (0.3)	1470 (0.3)
10-sep	1580 (0.2)	1830 (0.2)	1690 (0.4)	1600 (0.3)	1580 (0.1)	1240 (0.3)	1540 (0.3)
17-sep	2030 (0.2)	1400 (0.3)	3180 (0.3)	3450 (0.2)	3670 (0.1)	2460 (0.2)	1120 (0.4)
24-sep	800 (0.4)	1140 (0.4)	1740 (0.3)	1880 (0.2)	2060 (0.1)	2110 (0.2)	2330 (0.3)

Values are given in $\mu\text{Bq}/\text{m}^3$.

Error estimates (1σ %) are given in brackets.

* Two weeks filter

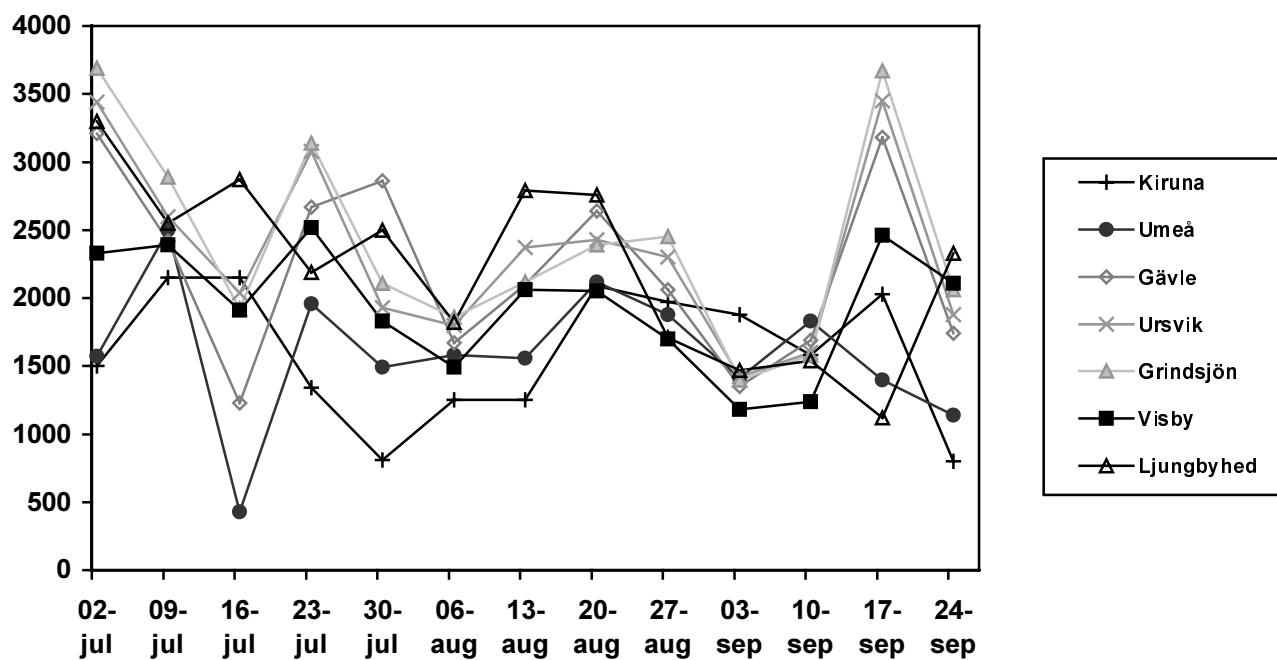


Table II

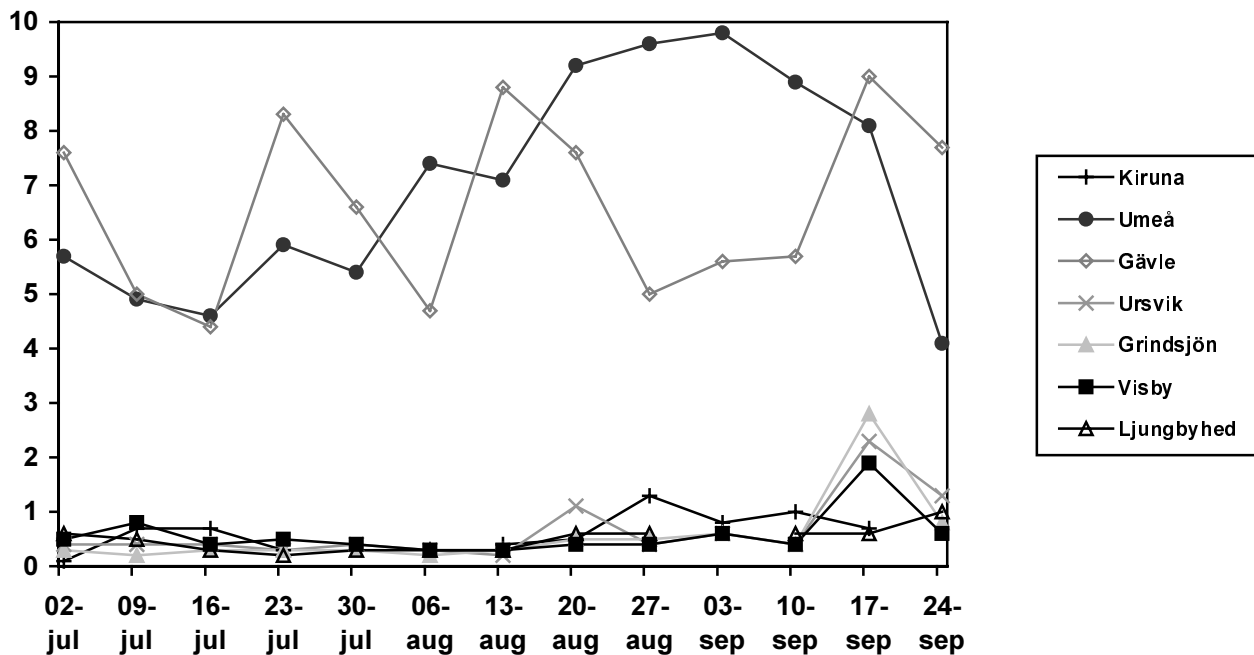
¹³⁷Cs concentrations in Sweden, third quarter 2001

<i>Week starting</i>	<i>Kiruna</i>	<i>Umeå</i>	<i>Gävle</i>	<i>Ursvik</i>	<i>Grindsjön</i>	<i>Visby</i>	<i>Ljungbyhed</i>
2-jul	<0.1	5.7 (3)	7.6 (3)	0.4 (25)	0.3 (9)	0.5 (16)	0.6 (21)
9-jul	0.7* (9)	4.9 (4)	5.0 (3)	0.4 (22)	0.2 (14)	0.8 (10)	0.5 (29)
16-jul	0.7* (9)	4.6 (3)	4.4 (4)	0.4 (22)	0.3 (11)	0.4 (23)	0.3 (36)
23-jul	0.3 (25)	5.9 (2)	8.3 (5)	0.3 (25)	0.3 (11)	0.5 (17)	0.2 (43)
30-jul	<0.3	5.4 (3)	6.6 (3)	0.4 (16)	0.3 (12)	0.4 (20)	0.3 (37)
6-aug	0.4* (11)	7.4 (2)	4.7 (5)	0.3 (21)	0.2 (17)	0.3 (27)	0.3 (32)
13-aug	0.4* (11)	7.1 (2)	8.8 (3)	0.2 (31)	0.3 (12)	0.3 (28)	0.3 (33)
20-aug	0.5 (16)	9.2 (2)	7.6 (3)	1.1 (9)	0.5 (7)	0.4 (18)	0.6 (21)
27-aug	1.3 (7)	9.6 (2)	5.0 (4)	0.4 (22)	0.3 (11)	0.4 (23)	0.6 (23)
3-sep	0.8 (11)	9.8 (2)	5.6 (3)	0.6 (13)	0.6 (5)	0.6 (13)	<0.2
10-sep	1.0 (10)	8.9 (2)	5.7 (3)	0.4 (22)	0.4 (8)	0.4 (20)	0.6 (21)
17-sep	0.7 (8)	8.1 (2)	9.0 (2)	2.3 (4)	2.8 (2)	1.9 (5)	0.6 (20)
24-sep	<0.2	4.1 (4)	7.7 (2)	1.3 (8)	0.8 (4)	0.6 (14)	1.0 (15)

Values are given in $\mu\text{Bq}/\text{m}^3$.

Error estimates (1σ %) are given in brackets.

* Two weeks filter



*Table III**Deposition measurements, third quarter 2001**Kiruna*

<i>Weeks</i>	<i>Period</i>	<i>⁷Be</i>	<i>¹³⁷Cs</i>	<i>Precipitation (mm)</i>
24 - 27	11/6 – 9/7	70400 (0.3)	<8	67.8
28 - 30	9/7 – 30/7	20400 (1.2)	36 (24)	17.5
31 - 35	30/7 – 3/9	15200 (1.4)	27 (42)	67.8
36 - 39	3/9 – 1/10	46400 (0.6)	51 (21)	49.7

Gävle

<i>Weeks</i>	<i>Period</i>	<i>⁷Be</i>	<i>¹³⁷Cs</i>	<i>Precipitation (mm)</i>
27 - 30	4/7 – 30/7	73800 (0.4)	330 (4)	53.5
31 - 34	30/7 – 27/8	38400 (0.4)	180 (3)	34.7
35 - 38	27/8 – 24/9	64000 (0.5)	140 (10)	87.9

Ursvik

<i>Weeks</i>	<i>Period</i>	<i>⁷Be</i>	<i>¹³⁷Cs</i>	<i>Precipitation (mm)</i>
26 - 29	25/6 – 23/7	68000 (0.3)	25 (20)	55.4
30 - 33	23/7 – 20/8	36900 (0.7)	<25	40.1
34 - 37	20/8 – 17/9	91200 (0.4)	<21	136.6

Ljungbyhed

<i>Weeks</i>	<i>Period</i>	<i>⁷Be</i>	<i>¹³⁷Cs</i>	<i>Precipitation (mm)</i>
25 - 28	18/6 – 16/7	89100 (0.4)	30 (33)	74.2
29 - 32	16/7 – 13/8	60700 (0.4)	21 (45)	100.6
33 - 36	13/8 – 10/9	65000 (0.5)	27 (34)	82.5

Values are given in mBq/m².

Error estimates (1σ %) are given in brackets.

*Table IV****Other anthropogenic radionuclides detected,
third quarter 2001***

<i>Week starting</i>	<i>Station</i>	<i>Isotope</i>	<i>Concentration</i>
24-sep	Gävle	¹³¹ I	2.4 (22)

Values are given in $\mu\text{Bq}/\text{m}^3$.
Error estimates (1 σ %) are given in brackets.